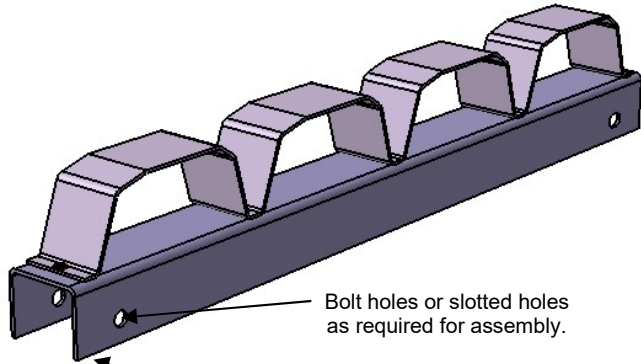
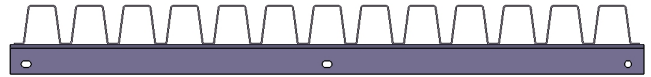
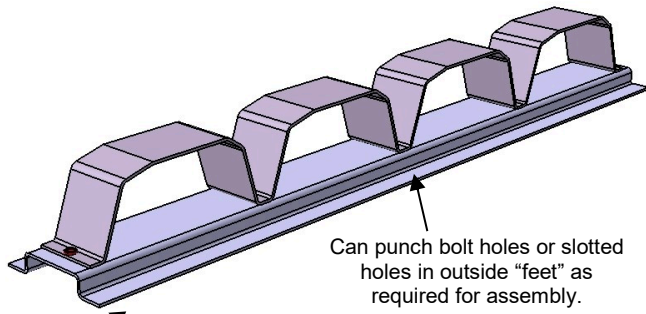


Substrate Options for Formed Steel Separators



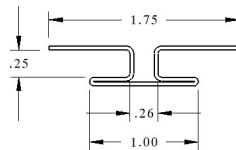
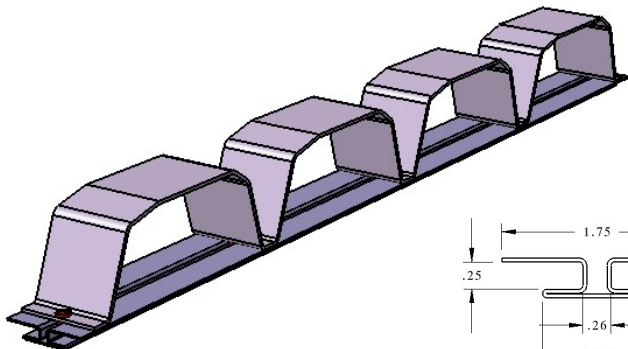
Bolt holes or slotted holes as required for assembly.

Rounded corners to specified radius if required.

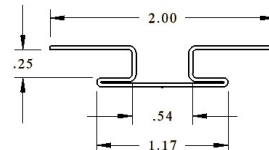


Can punch bolt holes or slotted holes in outside "feet" as required for assembly.

Rounded corners to specified radius if required.



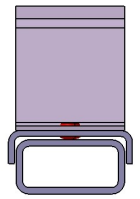
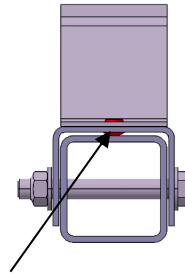
TRK-A



TRK-D

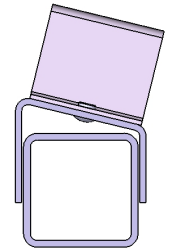
C-Channel option

Bolt or weld to structural steel tubing



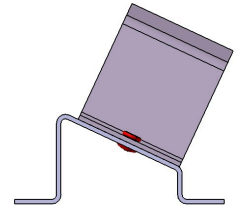
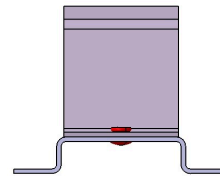
Allow clearance for rivet head or Tog-L-Loc button between bottom of C-Channel and top surface of tube.

Option for setting separator orientation at an angle.



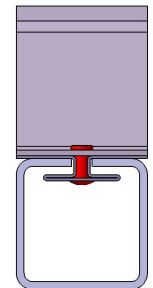
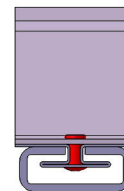
Hat-section option

Bolt or weld to flat steel surface



Option for setting separator orientation at an angle from the flat surface

T-Track retainer option



Designed to slide into standard roll formed c-channels and extruded aluminum bars.