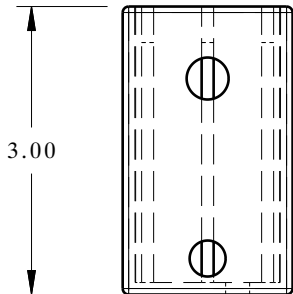
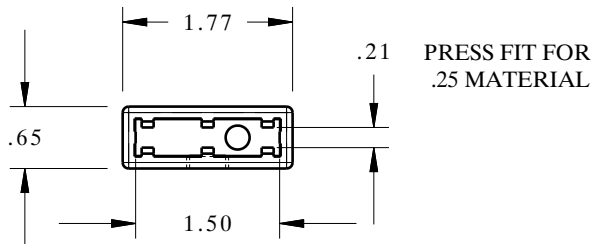
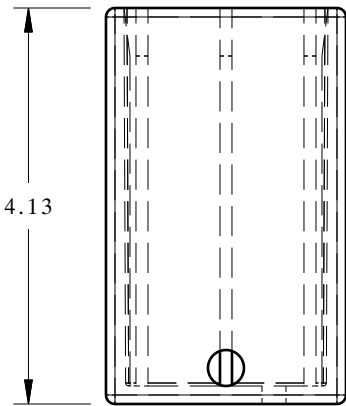
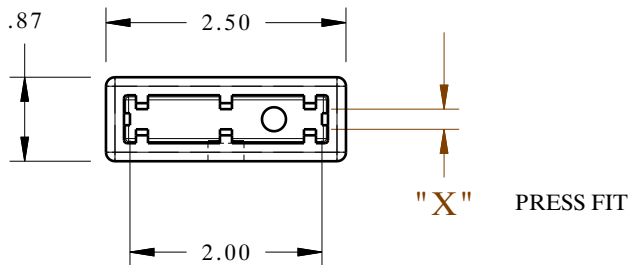
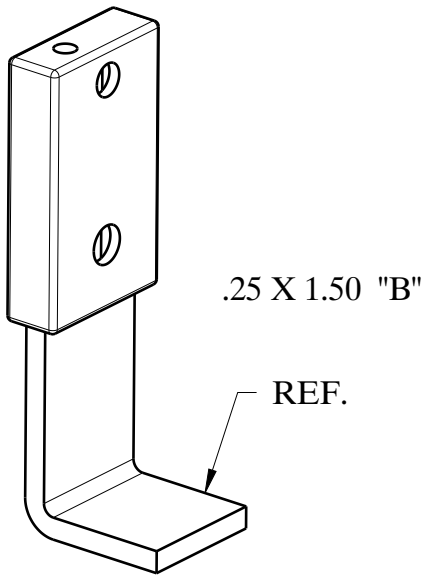


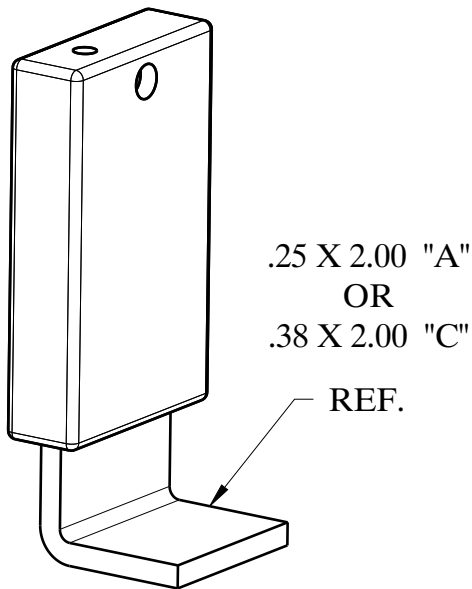
DE1116 RUBBER SLEEVE (LOLLI POP STOP)



	FITS ON	PART NO.
DE1116-B	.25 X 1.50	CMHE4621



	DIM "X"	PRESS FITS ON	PART NO.
DE1116-A	.21	.25 X 2.00	CMHE4620
DE1116-C	.34	.38 X 2.00	CMHE4602



Note: Rubber sleeves are designed to be press fit onto the steel bar, but they can also be fastened using a self-drilling, self-tapping screw if needed.

MATERIAL TYPE Thermoplastic Elastomer (TPE)
HARDNESS 90A (STOCK), Call
COLOR Black (STOCK), Call

RUBBER SLEEVE

Applications:
Bumper Stop
Panels (Skins & Assemblies)



800-443-5553

www.dunnage-eng.com