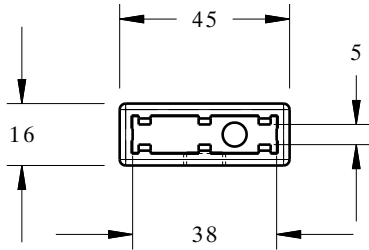
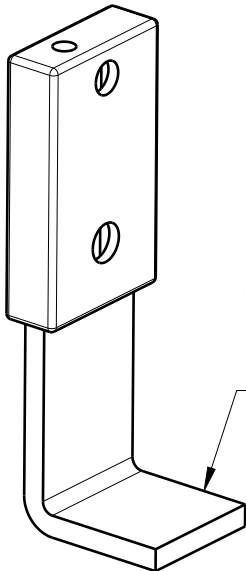
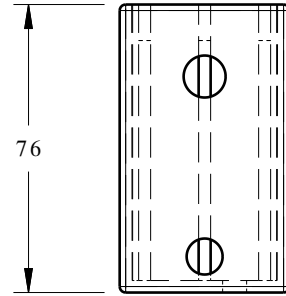


DE1116 RUBBER SLEEVE (LOLLI POP STOP)



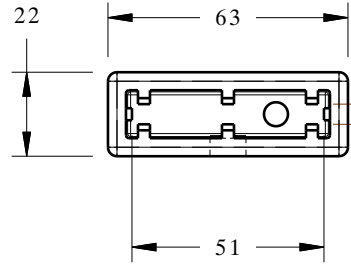
PRESS FIT FOR
6mm MATERIAL



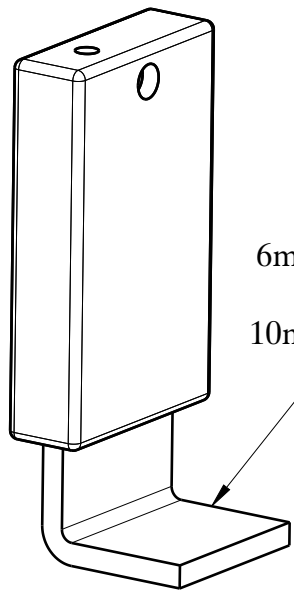
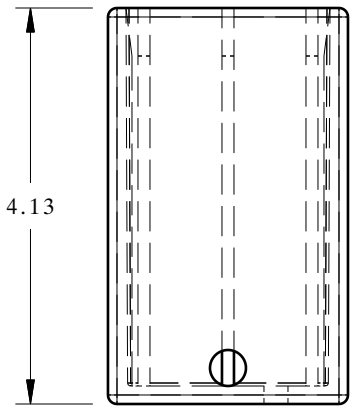
6mm x 38mm "B"

REF.

	FITS ON	PART NO.
DE1116-B	6 X 38	CMHE4621



"X" PRESS FIT



6mm x 51mm "A"
OR
10mm x 51mm "C"

REF.

	DIM "X"	PRESS FITS ON	PART NO.
DE1116-A	5	6 X 51	CMHE4620
DE1116-C	9	10 X 51	CMHE4602

Note: All Dimensions are in Millimeters

Note: Rubber sleeves are designed to be press fit onto the steel bar, but they can also be fastened using a self-drilling, self-tapping screw if needed.

MATERIAL TYPE Thermoplastic Elastomer (TPE)
HARDNESS 90A (STOCK), Call
COLOR Black (STOCK), Call

RUBBER SLEEVE

Applications:
Bumper Stop
Panels (Skins & Assemblies)

Dunnage Engineering

800-443-5553 www.dunnage-eng.com