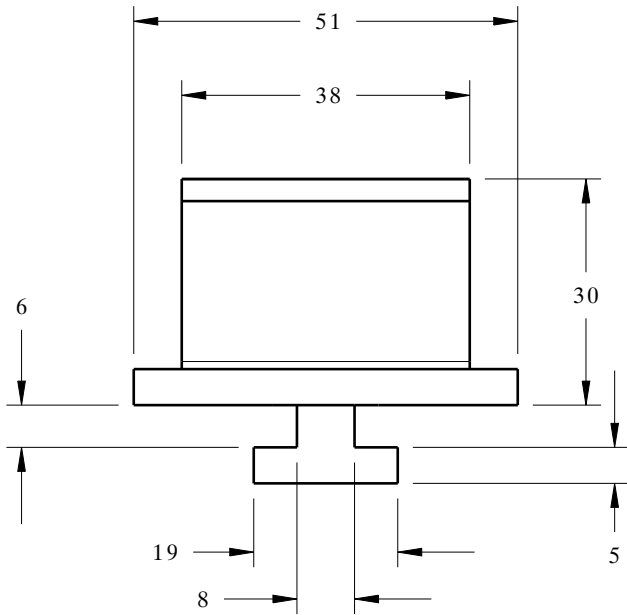
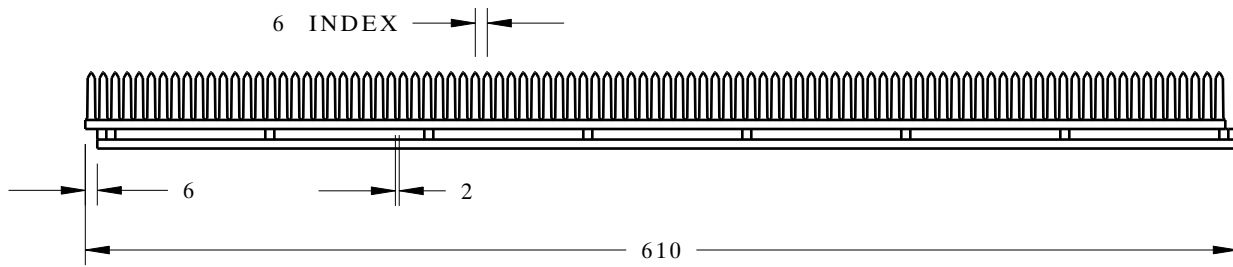
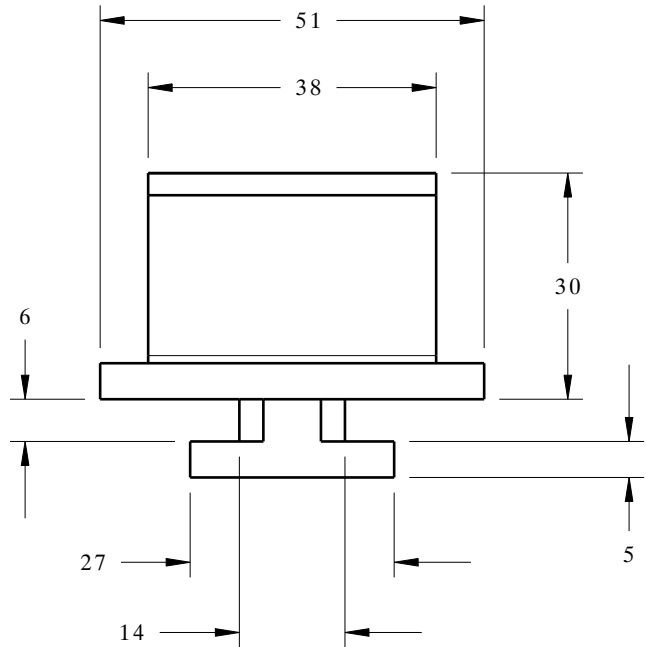


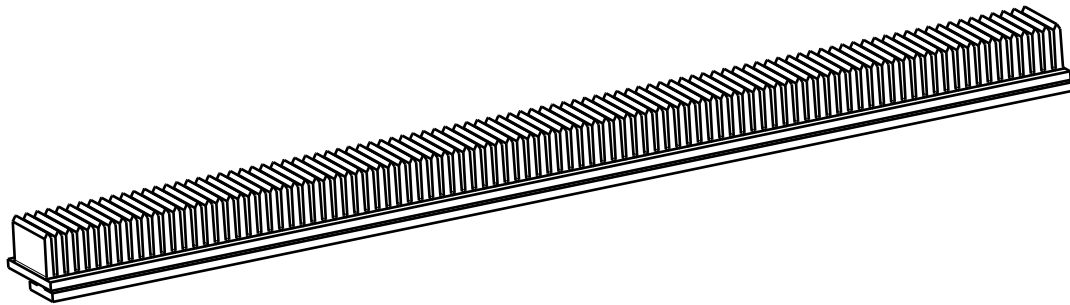
# COMB DUNNAGE



**TRK-A**



**TRK-E**



Typical uses:

1. Swing arm (close off) dunnage
2. Cantilever arm dunnage
3. Sheet Metal panel dunnage
4. Glass panel dunnage

**NOTE : All Dimensions are in Millimeters**

<b>MATERIAL TYPE</b> Thermoplastic Elastomer (TPE)
<b>HARDNESS (SHORE A)</b> 70 (Soft) , 80, 90
<b>COLOR</b> Grey (Stock) , Black, Call

**COMB DUNNAGE**

**Applications:**

- Generic close off
- Captures part flange



800-443-5553

www.dunnage-eng.com